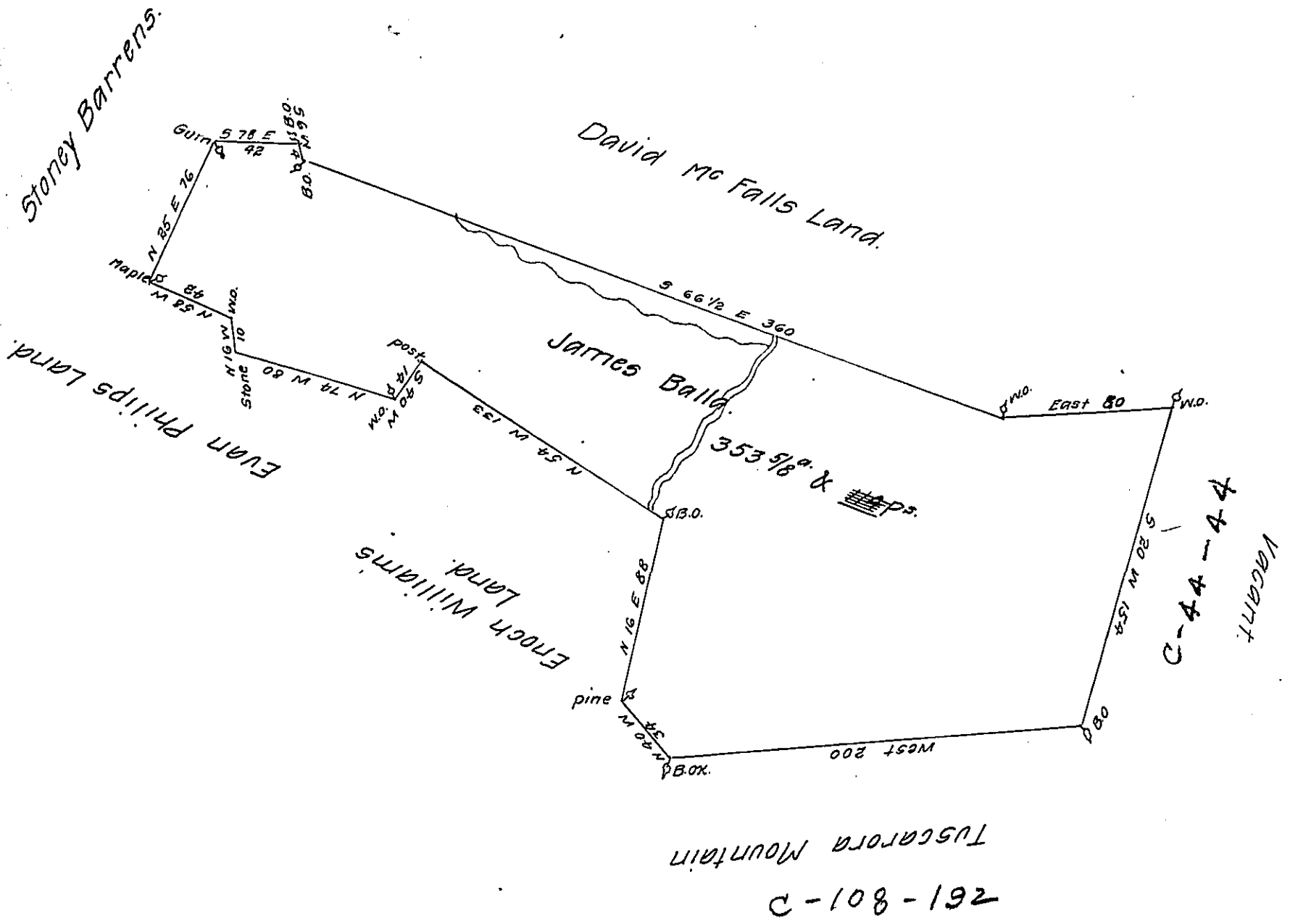


FORM NO 1.



A draught of a tract of Land situate on Both sides of the little Gove Creek in Air township in the County of Bedford containing Three hundred and fifty three acres and one hundred and fourteen perches with the usual allowance of six pr cent for roads &c<sup>a</sup>. Surveyed for James Balla the 10<sup>th</sup> day of October 1785 In pursuance of a warrant dated November 22<sup>d</sup>. 1785

George Woods D.S.

To John Lukens Esqr. S.G.

IN TESTIMONY that the above is a copy of the original remaining on file in the Department of Internal Affairs of Pennsylvania, made conformably to an Act of Assembly approved the 16th day of February, 1833, I have hereunto set my Hand and caused the Seal of said Department to be affixed at Harrisburg, this nineteenth day of September 1907.

*Henry Howell*

Secretary of Internal Affairs.